

Solution Details



FieldTRAKS Agriculture Record Keeping System (ARKS)

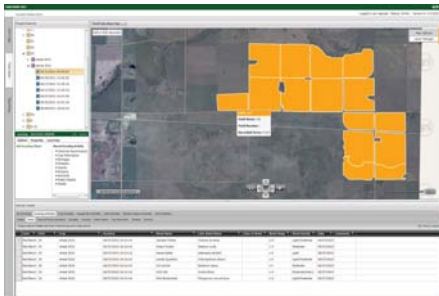
FieldTRAKS ARKS makes collecting, managing and reporting agriculture data a breeze.

ARKS is a GIS-based application framework designed to collect, record, manage and report detailed technical or operational records of agricultural practices. Clients can either use one of several existing User Profiles to record activity data including tillage, crop plantings, soil and tissues samples, applications of chemicals, and cost of inputs, to name a few or develop a custom profile to meet their specific business needs.



Whether it's value-enhanced commodities, certification, or customer support, there is a critical need for today's agri-industry to be able to track agricultural production at all levels. FieldTRAKS ARKS enables businesses to manage their farm and field level record keeping using a data structure that matches their needs.

FieldTRAKS ARKS is designed to provide a flexible framework for record collection and reporting. It is constructed in a .NET architecture and supports W3C standards such as Web Services to ensure integration with other data systems and rapid application development.

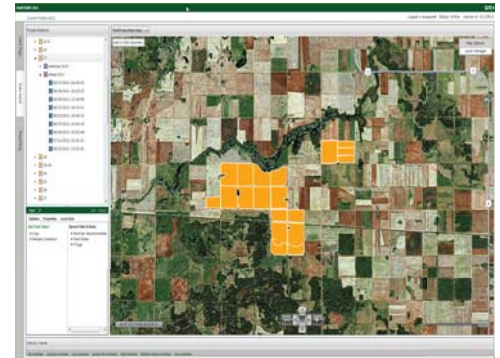


FieldTRAKS ARKS meets the needs for on-farm record keeping, production management, contract management and traceability.

It is designed for Producers, Processors, Agri-Businesses & Agencies such as product dealers, insurance brokers and crop advisors & regulators. For each business sector it can be customized to meet their information & reporting requirements. Typical application areas include:

- Tracking & Traceability
- Scouting Reports
- Compliance & Certification
- Nutrient Management
- Carbon Credit Auditing
- Records Management
- Contract Management
- Market Analysis

Data entry is simplified through the use of customizable drop-down lists that in the case of fertilizer and chemicals, link to product information details for advanced reporting.



Customizable

FieldTRAKS is designed to be highly adaptable to meet business specific data collection requirements.

Customers can define their own set of activities associated to either a Farm, Field (e.g., Record a Planting) or AgObject and the data properties associated with the activity. Data access rights and privileges can be defined between User IDs and activities. The customization is done through database and web configuration resulting in easy to maintain and rapidly built solutions.

info @ fieldtraks.ca

tel: 613.489.0550
fax: 613.727.7563

6367 McCordick Road
Ottawa, ON, K0A 2T0

www.fieldtraks.ca

FieldTRAKS ARKS – WEB Based GIS



Efficient data input using palette menu controls



Context aware dialogs and list boxes



Design for ruggedized tablets



Onscreen GIS digitizing and GPS support



Displays Bing Maps, WMS Maps and Local GIS data



Web-based application that also works offline



Custom report templates that write to HTML & Word

Rich imagery and road mapping content is provided from Microsoft Bing. Clients can add their own WMS libraries and local imagery & GIS content.

Geographic farm data is stored and displayed in a vector format and can be exchanged with other mapping systems. Data can be uploaded directly using Shapefiles in either lat-long or UTM coordinates and can be exported using open standards.

Key Features:

- Digitize polygon, multi-polygon, polyline and point features.
- Supports Lat-Long and UTM data.
- Layer Manager with controls to navigate, interact and customize the display of geographic data.
- Supports Open Geographic Standards (Well Known Text Format)
- Imports Shapefiles (SHP).
- Supports unlimited number of WMS Servers for background imagery.
- Easily customized through an XML configuration file.
- Supports spatial query operations.

FieldTRAKS ARKS has an intuitive mapping interface that enables clients to capture, navigate and query their farm records and display satellite and street mapping for easy reference.

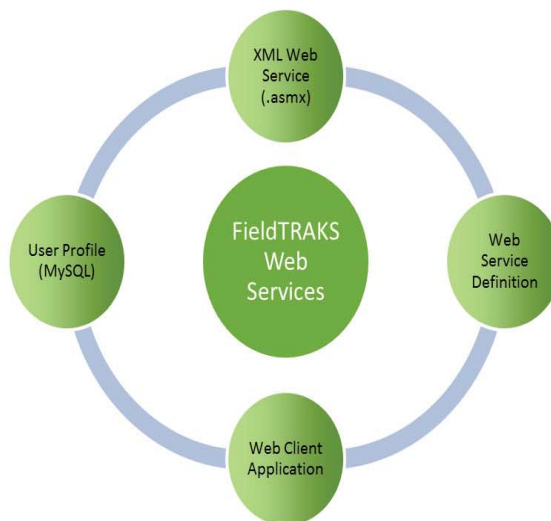
FieldTRAKS provides a complete suite of tools for clients to digitize and edit geographic farm data such as field boundaries, storage facilities and inspection locations.

Web Services = Application Interoperability

FieldTRAKS applications are constructed from reusable business components, called services. A service is a software building block that performs a distinct function – such as create a farm record or retrieve data for an activity in desktop or mobile application.

Web components are loosely associated and self-defined, allowing them to be linked together easily and quickly as business requirements demand. A key benefit of this architecture is that services are not restricted to specific hardware/operating system platforms.

The Web Service model allows clients or other 3rd parties to construct their own applications.



Flexible Licensing Models

Customers have the benefit of choosing the best license model that fits their business requirements.

Software as a Service (SaaS)

ARKS is available as a hosted application using either standard or customer customized interfaces. Customers pay an annual subscription fee that covers hosting, licensing and support.

Enterprise Licensing

For larger businesses and public sector clients, enterprise licensing is available where the clients provide their own hosting services. Professional services are provided for customization, instal-

info @ fieldtraks.ca



tel: 613.489.0550
fax: 613.727.7563

6367 McCordick Road
Ottawa, ON, K0A 2T0

www.fieldtraks.ca